



# shopfloor

## Manufacturing Execution System

The natural extension of your industrial ERP. Integrated. Intelligent. Real-time.



# What is ShopFloor?

## a MES

**ShopFloor** is a complete Manufacturing Execution System designed to digitize and optimize shop floor operations in real time. It connects planning (ERP) to execution, ensuring full visibility over production, quality, stock, and efficiency.



### Without MES

- Lack of real-time visibility
- Downtime not tracked
- Non-traceable rejections
- Estimation-based planning
- Data scattered in Excel
- Inability to measure real OEE
- Late reaction to issues

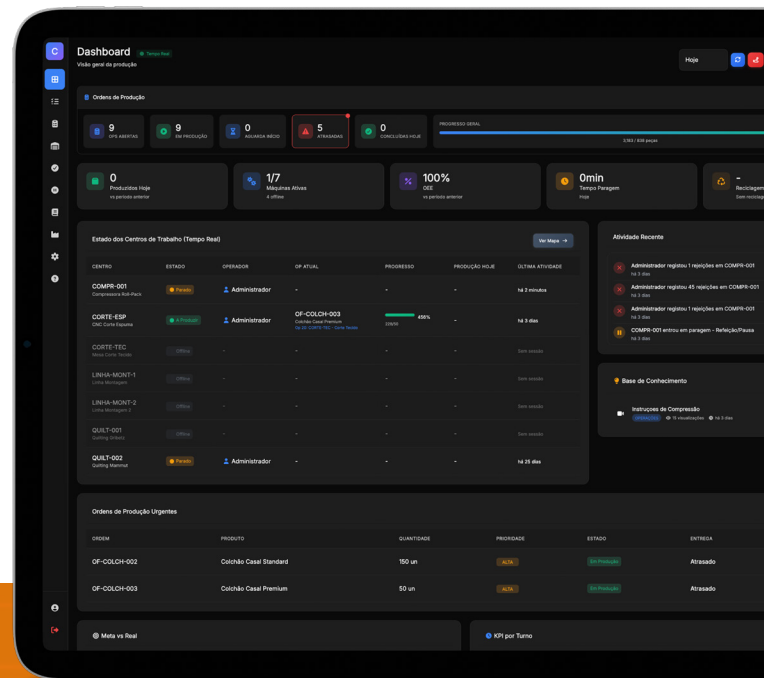


### With MES

- Real-time OEE dashboard
- Automatic downtime logging
- Full batch traceability
- Data-driven planning
- Centralized data
- Automatic KPIs
- Alerts

# Platform Overview

Control, analyze, and make decisions with confidence through real-time monitoring.



## Dashboard & KPIs

- Real-time KPIs
- OEE
- Interactive charts and alerts



## Shop Floor

- Grid and 2D map of workcenters
- Real-time status
- Visual indicators per machine



## Production

- Touch screen for operators



## Production Orders

Complete planning with:

- Gantt
- Kanban
- Traceability



## Inventory

- Stock movements
- Advanced warehouses with zones and locations
- Batch traceability
- Minimum stock alerts



## Quality

- Non-conformities
- Inspections

# Real-Time Dashboard & KPIs

## OEE

Availability × Performance × Quality

## 24/7

Monitoring

## Dashboards

Interactive reports

## Live alerts

Downtime, rejections, delays

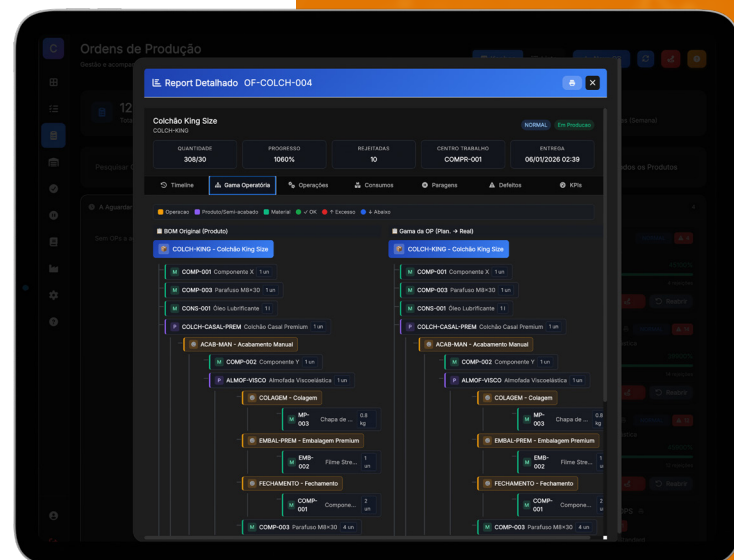
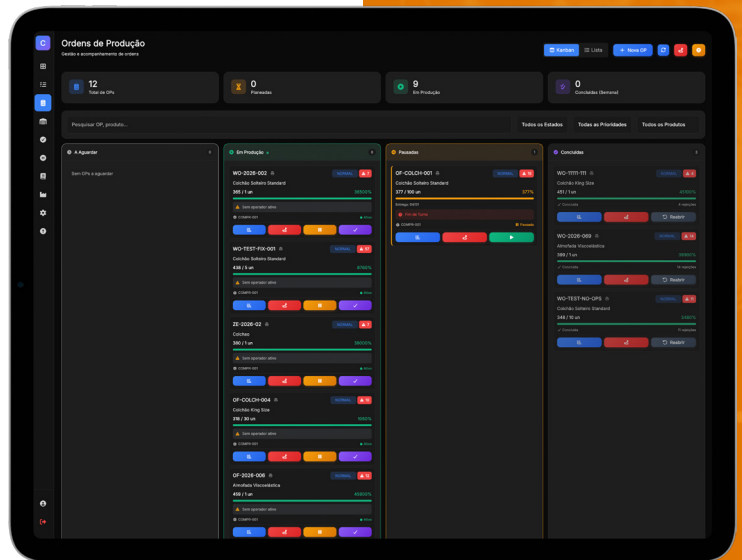
## Artificial Intelligence

Production planning via conversational agent

Coming soon

### Features:

- Configurable widgets
- Interactive drill-down
- Machine ranking
- Production charts
- Event timeline

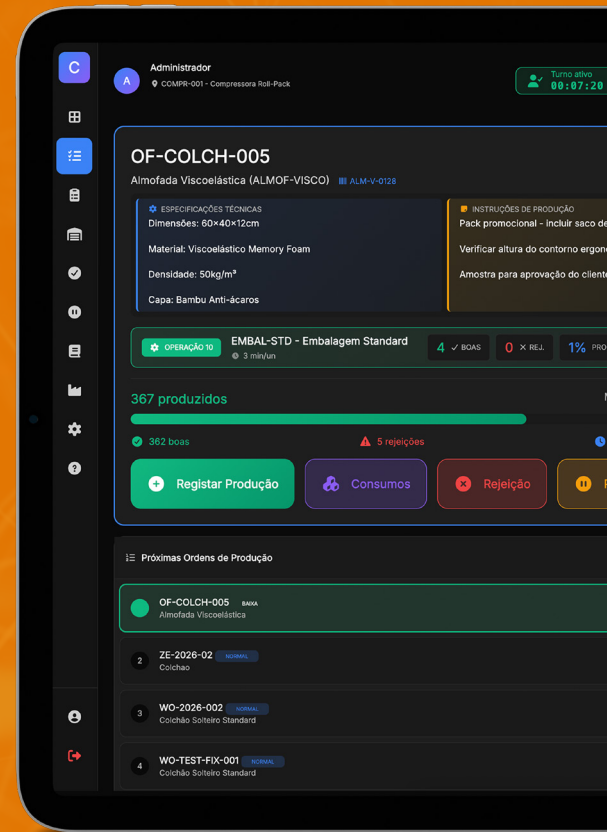


# Operator Screen

## Interface for Operators

### Content:

- Large, touch-friendly buttons
- Fast login via PIN or RFID card
- Production reporting with +1, +5, +10, +50 increments
- Rejection recording with defect type
- Downtime logging with categorization
- Stock movements (IN/OUT/Transfer)
- Contextual instructions and technical sheets
- Kiosk mode (full screen)
- Auto-save and offline mode
- Action confirmation sounds



### Responsive

Works on tablet and smartphone on the shop floor



### Real Time

Immediate update of progress and counters



### Offline

Coming soon

Offline operator screen with synchronization

# Production Orders & Stock Management

The complete ecosystem for your business management.

## Production Orders

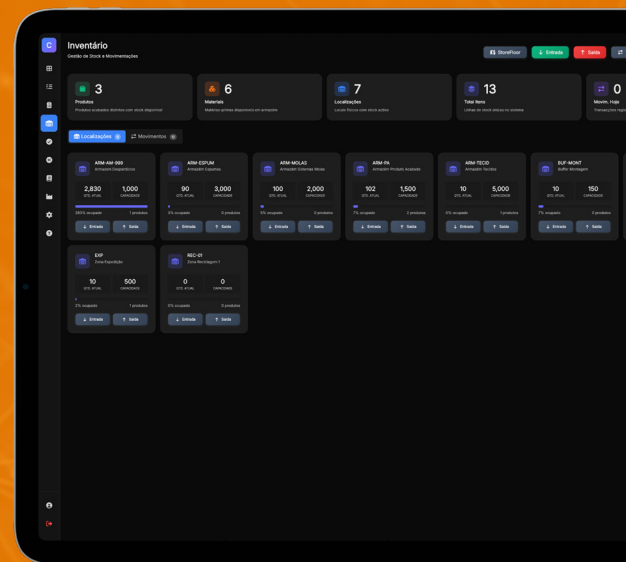
- Full cycle: Planned > Completed
- Automatic product routing
- Gantt, Kanban and Calendar views
- Full traceability per operation
- Delay and stock shortage alerts
- Automatic PDF generation with barcode for production orders and operations
- History of actual vs estimated times

## Stock Management

- Movements: Entry, Exit, Transfer
- Traceability by batch and location
- Fully configurable hierarchical locations
- Automatic low stock alerts
- Complete movement history
- Cycle inventory (stock counts)
- Export to Excel and CSV

## High Customization by the Customer

- Industry templates
- Flexible master data
- No-code configuration
- Integrated label creation and editing





## Types of Operation

- Cutting; Sewing; Assembly; Finishing

The customer defines the operations of their industry



## Types of Downtime

- Breakdown; Setup; Material shortage; Cleaning

Categorized as planned or unplanned



## Types of Defects

- Sewing; Stains; Measurements

With severity and color codes



## Workcenters

- Machines; Workstations; Assembly lines with capacities and associated operations



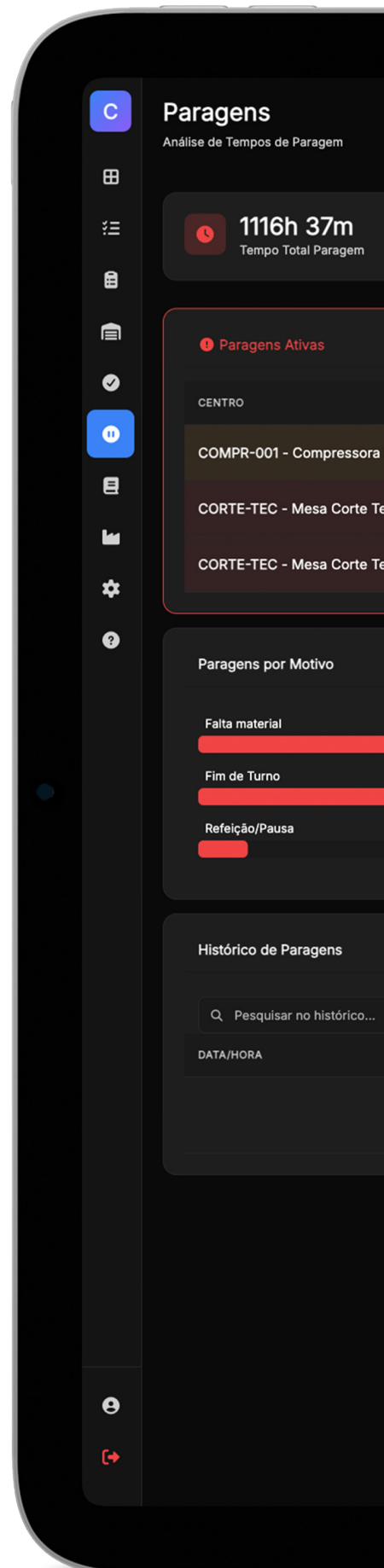
## Locations

- Warehouse hierarchy; zones and shelves freely configurable



## Product Routing

Each product defines its sequence of operations and standard times.



# Integrations & API

## Complete REST API

- Secure JWT authentication
- Production endpoints (start, record, reject)
- Manufacturing orders CRUD
- Stock queries and transactions
- Workcenter and product management
- Knowledge base and attachments
- Webhooks for real-time events



## Connectors & Webhooks

**ERP:** SAP, Business Central, Primavera, PHC, Epicor, and others with webservice communication capabilities

**BI:** Integration with Power BI available

**Communication:** Email, SMS, and others



## Security

Multi-tenant, JWT, role-based access control, PIN/RFID/password authentication

# Advantages by Role



## Production Director

- Full visibility of the shop floor
- OEE and KPIs automatically calculated
- Quick identification of bottlenecks
- Planning based on real data
- Proactive alerts for stoppages and delays
- Production planning via conversation with an agent



## IT / IS Director

- REST API for ERP/BI integration
- Modern web architecture
- Webhooks for automation
- Security with JWT and RBAC



## Administration

- Measurable ROI through waste reduction
- Fast implementation with templates
- No additional customization costs
- Traceability for audits
- Reports for decision-making

# Technical Requirements & Implementation



## Infrastructure – minimum requirements

- Linux or Windows service (min. 2GB RAM)
- PHP 8.1+ with Symfony 6
- MySQL / PostgreSQL database
- Modern browser (Chrome, Edge, Firefox)
- SSL certificate (HTTPS)
- WiFi network on the shop floor



## Typical implementation

**Weeks 1-3:** Setup, configuration and master data

**Weeks 4-5:** ERP integration

**Weeks 6-7:** Industry-specific configuration and routing

**Weeks 8-9:** Training of operators and supervisors

**Week 10:** Assisted go-live with support

**Ongoing:** Technical support and continuous



Works on desktop, tablet and smartphone. Responsive interface.

# shopfloor



## Contact us

Take your **sales force** to the next level. Contact us for a ShopFloor demonstration

## Fullscreen Porto

Rua 25 Abril, nº 1048B,  
4410-014 Serzedo VN Gaia  
+351 22 753 9683  
comercial@fullscreen.pt

## Fullscreen Lisboa

Av. José Malhoa  
1070-157, Lisboa  
Portugal

Advanced web solutions:  
website, portals, eCommerce, b2c,  
b2b, b2b2c, marketplace, RM,  
integration, SEO, digital marketing



Schedule demo