



shopfloor

Manufacturing Execution System

The natural extension of your industrial ERP. Integrated. Intelligent. Real-time.



What is ShopFloor?

a MES

ShopFloor is a complete Manufacturing Execution System designed to digitize and optimize shop floor operations in real time. It connects planning (ERP) to execution, ensuring full visibility over production, quality, stock, and efficiency.



Without MES

- Lack of real-time visibility
- Downtime not tracked
- Non-traceable rejections
- Estimation-based planning
- Data scattered in Excel
- Inability to measure real OEE
- Late reaction to issues

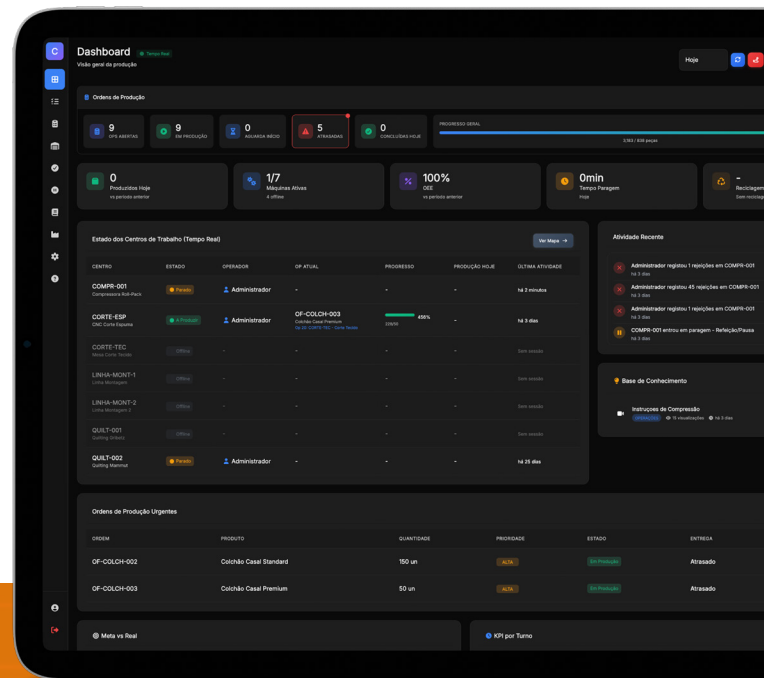


With MES

- Real-time OEE dashboard
- Automatic downtime logging
- Full batch traceability
- Data-driven planning
- Centralized data
- Automatic KPIs
- Alerts

Platform Overview

Control, analyze, and make decisions with confidence through real-time monitoring.



Dashboard & KPIs

- Real-time KPIs
- OEE
- Interactive charts and alerts



Shop Floor

- Grid and 2D map of workcenters
- Real-time status
- Visual indicators per machine



Production

- Touch screen for operators



Production Orders

Complete planning with:

- Gantt
- Kanban
- Traceability



Inventory

- Stock movements
- Advanced warehouses with zones and locations
- Batch traceability
- Minimum stock alerts



Quality

- Non-conformities
- Inspections

Real-Time Dashboard & KPIs

OEE

Availability × Performance × Quality

24/7

Monitoring

Dashboards

Interactive reports

Live alerts

Downtime, rejections, delays

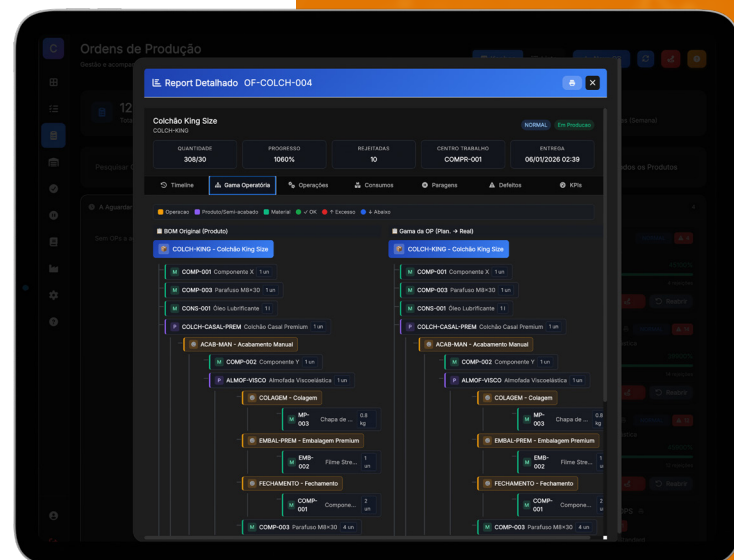
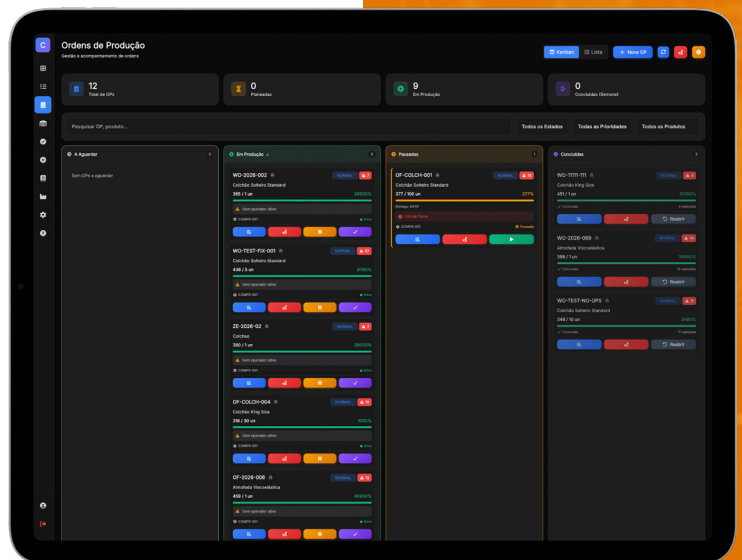
Artificial Intelligence

Production planning via conversational agent

Coming soon

Features:

- Configurable widgets
- Interactive drill-down
- Machine ranking
- Production charts
- Event timeline

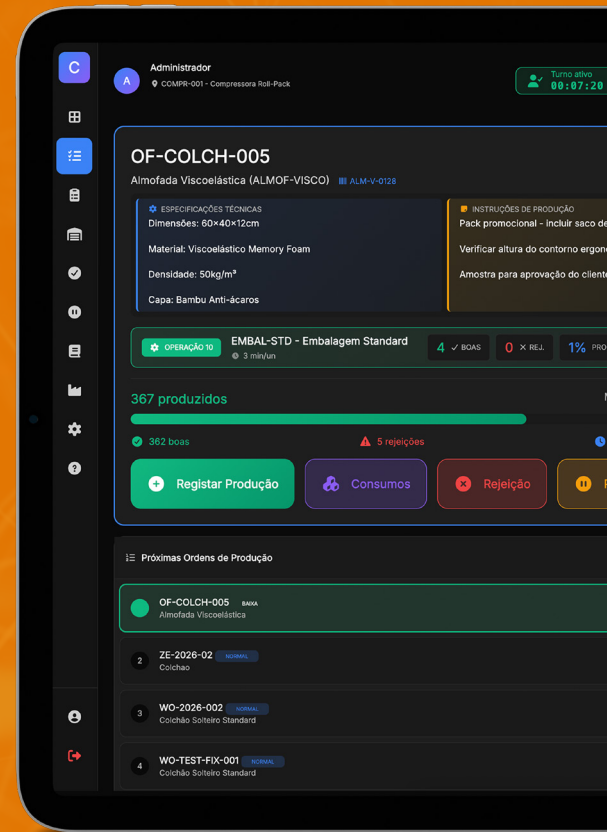


Operator Screen

Interface for Operators

Content:

- Large, touch-friendly buttons
- Fast login via PIN or RFID card
- Production reporting with +1, +5, +10, +50 increments
- Rejection recording with defect type
- Downtime logging with categorization
- Stock movements (IN/OUT/Transfer)
- Contextual instructions and technical sheets
- Kiosk mode (full screen)
- Auto-save and offline mode
- Action confirmation sounds



Responsive

Works on tablet and smartphone on the shop floor



Real Time

Immediate update of progress and counters



Offline

Coming soon

Offline operator screen with synchronization

Production Orders & Stock Management

The complete ecosystem for your business management.

Production Orders

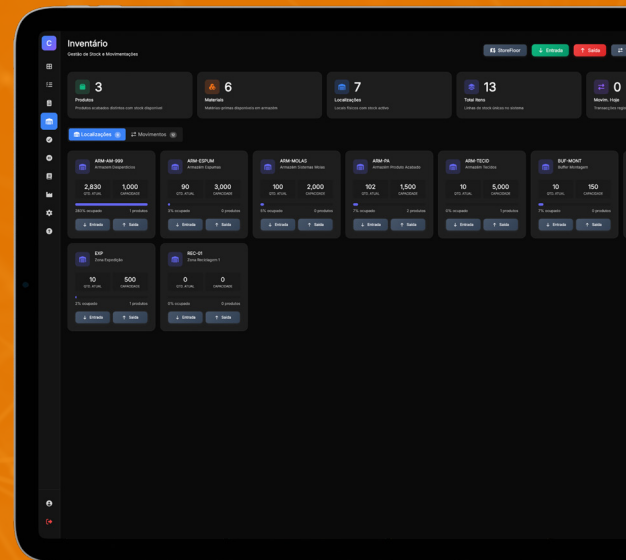
- Full cycle: Planned > Completed
- Automatic product routing
- Gantt, Kanban and Calendar views
- Full traceability per operation
- Delay and stock shortage alerts
- Automatic PDF generation with barcode for production orders and operations
- History of actual vs estimated times

Stock Management

- Movements: Entry, Exit, Transfer
- Traceability by batch and location
- Fully configurable hierarchical locations
- Automatic low stock alerts
- Complete movement history
- Cycle inventory (stock counts)
- Export to Excel and CSV

High Customization by the Customer

- Industry templates
- Flexible master data
- No-code configuration
- Integrated label creation and editing





Types of Operation

- Cutting; Sewing; Assembly; Finishing

The customer defines the operations of their industry



Types of Downtime

- Breakdown; Setup; Material shortage; Cleaning

Categorized as planned or unplanned



Types of Defects

- Sewing; Stains; Measurements

With severity and color codes



Workcenters

- Machines; Workstations; Assembly lines with capacities and associated operations



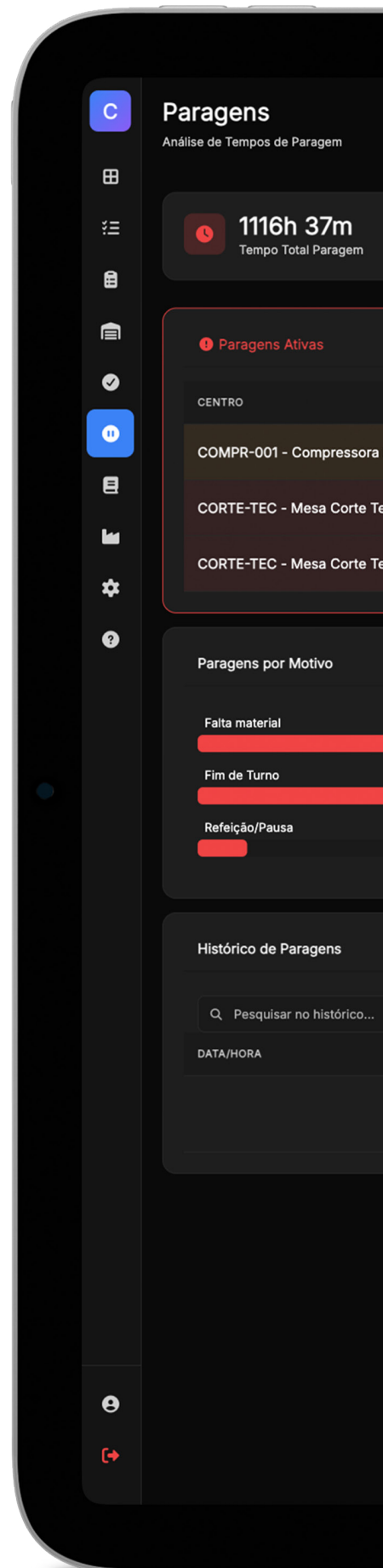
Locations

- Warehouse hierarchy; zones and shelves freely configurable



Product Routing

Each product defines its sequence of operations and standard times.



Integrations & API

Complete REST API

- Secure JWT authentication
- Production endpoints (start, record, reject)
- Manufacturing orders CRUD
- Stock queries and transactions
- Workcenter and product management
- Knowledge base and attachments
- Webhooks for real-time events



Connectors & Webhooks

ERP: SAP, Business Central, Primavera, PHC, Epicor, and others with webservice communication capabilities

BI: Integration with Power BI available

Communication: Email, SMS, and others



Security

Multi-tenant, JWT, role-based access control, PIN/RFID/password authentication

Advantages by Role



Production Director

- Full visibility of the shop floor
- OEE and KPIs automatically calculated
- Quick identification of bottlenecks
- Planning based on real data
- Proactive alerts for stoppages and delays
- Production planning via conversation with an agent



IT / IS Director

- REST API for ERP/BI integration
- Modern web architecture
- Webhooks for automation
- Security with JWT and RBAC



Administration

- Measurable ROI through waste reduction
- Fast implementation with templates
- No additional customization costs
- Traceability for audits
- Reports for decision-making

Technical Requirements & Implementation



Infrastructure – minimum requirements

- Linux or Windows service (min. 2GB RAM)
- PHP 8.1+ with Symfony 6
- MySQL / PostgreSQL database
- Modern browser (Chrome, Edge, Firefox)
- SSL certificate (HTTPS)
- WiFi network on the shop floor



Typical implementation

Weeks 1-3: Setup, configuration and master data

Weeks 4-5: ERP integration

Weeks 6-7: Industry-specific configuration and routing

Weeks 8-9: Training of operators and supervisors

Week 10: Assisted go-live with support

Ongoing: Technical support and continuous



Works on desktop, tablet and smartphone. Responsive interface.

shopfloor



Contact us

Take your **sales force** to the next level. Contact us for a ShopFloor demonstration

Fullscreen Porto

Rua 25 Abril, nº 1048B,
4410-014 Serzedo VN Gaia
+351 22 753 9683
comercial@fullscreen.pt

Fullscreen Lisboa

Av. José Malhoa
1070-157, Lisboa
Portugal

Advanced web solutions:
website, portals, eCommerce, b2c,
b2b, b2b2c, marketplace, RM,
integration, SEO, digital marketing



Schedule demo

**Authorized
partner**

